



PLL ALARM CLOCK RADIO WITH WIRELESS QI CHARGER,
USB PORT FOR CHARGING, MP3 PLAYBACK AND BLUETOOTH



Model : HX-202Qi

(Bluetooth pairing code: HX-202Qi HANNLOMAX)

IMPORTANT SAFETY INSTRUCTIONS

1. Read these instructions.
2. Keep these instructions.
3. Heed all warnings.
4. Follow all instructions.
5. Do not use this apparatus near water.
6. Clean only with dry cloth.
7. Do not block any ventilation openings. Install in accordance with the manufacturer's instructions.
8. Do not install near any heat sources such as radiators, heat registers, stoves, or other apparatus (including amplifiers) that produce heat.
9. Do not defeat the safety purpose of the polarized or grounding-type plug. A polarized plug has two blades with one wider than the other. A grounding type plug has two blades and a third grounding prong. The wide blade or the third prong are provided for your safety. If the provided plug does not fit into your outlet, consult an electrician for replacement of the obsolete outlet.
10. Do not defeat the safety purpose of the polarized or grounding-type plug. A polarized plug has two blades with one wider than the other. A grounding type plug has two blades and a third grounding prong. The wide blade or the third prong are provided for your safety. If the provided plug does not fit into your outlet, consult an electrician for replacement of the obsolete outlet.
11. Protect the power cord from being walked on or pinched particularly at plugs, convenience receptacles, and the point where they exit from the apparatus.
12. Only use attachments/accessories specified by the manufacturer.
13. Use only with the cart, stand, tripod, bracket, or table specified by the manufacturer, or sold with the apparatus. When a cart is used, use caution when moving the cart/apparatus combination to avoid injury from tip-over.
14. Unplug this apparatus during lightning storms or when unused for long periods of time.
15. Refer all servicing to qualified service personnel. Servicing is required when the apparatus has been damaged in any way, such as power-supply cord or plug is damaged, liquid has been spilled or objects have fallen into the apparatus, the apparatus has been exposed to rain or moisture, does not operate normally, or has been dropped.

FCC NOTICE

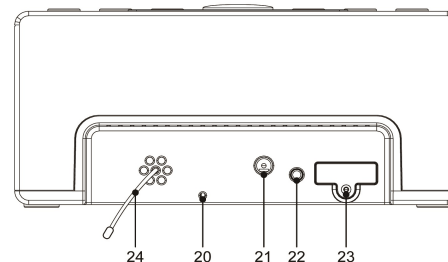
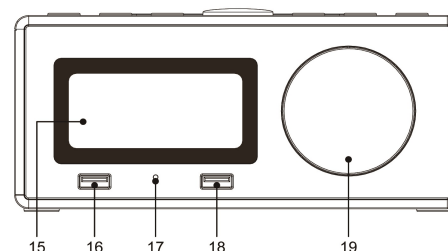
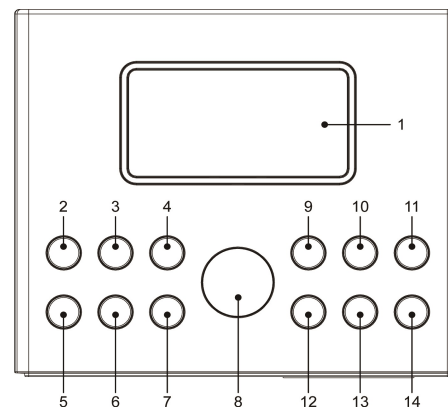
This device complies with part 15 of the FCC Rules. Operation is subject to the following two conditions :

(1) This device may not cause harmful interference, and (2) this device must accept any interference received, including interference that may cause undesired operation.

SPECIFICATIONS

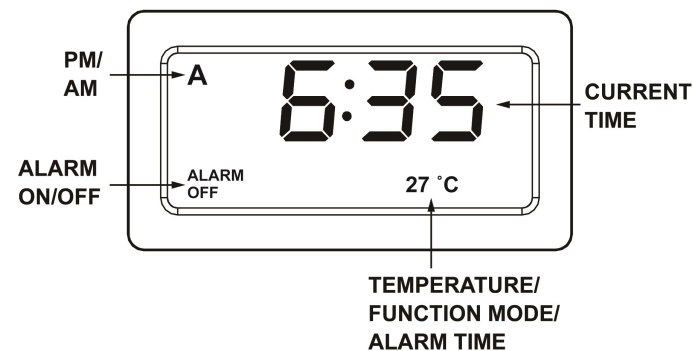
Frequency Range: FM 87.5 – 108 MHz
Power Supply: AC 100-240V ~ 60/50 Hz
Rated Output: DC9V / 3.5A
Backup Battery: CR2032 X 1 pc
Specifications are subject to change without prior notice.

LOCATION OF CONTROL



- 1 Phone Support (for Qi charging)
- 2 STANDBY BUTTON
- 3 VOL + BUTTON
- 4 TIME/M+/+10 BUTTON
- 5 FUNC BUTTON
- 6 VOL – BUTTON
- 7 ALARM ON/OFF BUTTON
- 8 SNOOZE / DIMMER BUTTON / NIGHT LIGHT
- 9 ► / FM SCAN/ BT UNPAIR Button
- 10 PRESET / ■ BUTTON
- 11 SKIP+/TU+/ LIGHT + BUTTON
- 12 TIME ZONE BUTTON
- 13 SLEEP/TEMPERATURE BUTTON
- 14 SKIP-/TU-/LIGHT- BUTTON
- 15 LCD DISPLAY
- 16 USB PORT FOR CHARGING (1A)
- 17 Wireless Charging Status Indicator
- 18 USB PORT FOR CHARGING (1A) AND PLAYBACK
- 19 Speaker
- 20 FM Antenna
- 21 DC JACK
- 22 AUX-in JACK
- 23 BACKUP BATTERY COMPARTMENT
- 24 TEMPERATURE SENSOR

LCD DISPLAY



CONNECTING THE UNIT TO POWER

AC OPERATION

Plug one end of the AC adaptor into the DC power Input, and then plug the other end into AC wall outlet. Before switching on the unit, make sure that the voltage of your electricity supply is the same on the rating plate.

BACK-UP BATTERY

The unit has pre-installed a CR-2032 lithium battery inside the back-up battery compartment. In case of power failure or interrupted AC power, the current time, alarm time and the stored radio stations are preserved in the memory of the unit by means of battery back-up function.

OPERATE THE CLOCK

When the clock is plugged in, the correct time will be displayed after a few seconds. **(Note : The default Time Zone is set on Zone 2 - Eastern Time)**. The clock will automatically indicate the AM (A) or PM(P) time on the display.

SELECT THE TIME ZONE

There are 7 time zones programmed as follows:

ZONE 1 – Atlantic Time

ZONE 2 – Eastern Time **(Default Setting)**

ZONE 3 – Central Time

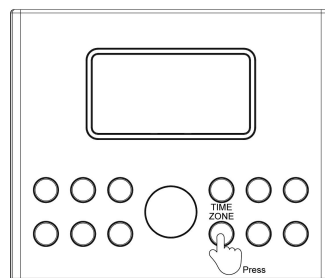
ZONE 4 – Mountain Time

ZONE 5 – Pacific Time

ZONE 6 – Yukon Time

ZONE 7 – Hawaiian Time

Adjust the time zone



CHANGE THE TIME ZONE

Make sure that the unit is in **STANDBY** mode. To confirm, press the **STANDBY** Button

While the unit is in **STANDBY** mode, press the **TIME ZONE** Button, the display will show the current time zone number.

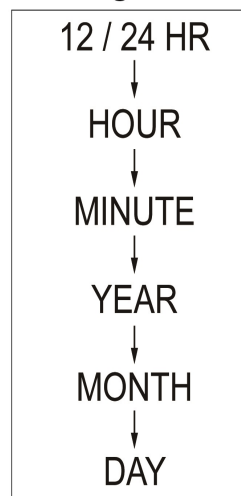
Press the **TIME ZONE** Button repeatedly to select your time zone. When the desired time zone is selected, release the Button, the time zone will store in the memory after 1-2 seconds.

When you moved to a different time zone, simply change the time zone to the new time zone, the unit will store the new time zone in the memory.

SETTING THE CLOCK AND DATE

1. You can only set the Clock and Date when the unit is in **STANDBY** mode, (When the unit is in **STANDBY** mode, there will be **NO** function modes)
2. **12 HOURS/ 24 HOURS SETTING**: Press and hold the **TIME/M+/-10** Button for about 1 second, (The display will show **12HR** or **24 HR**)
3. Press the **SKIP+/TU+/LIGHT+** or **SKIP-/TU-/LIGHT-** Button to select the desired setting. Press **TIME** Button to confirm.
4. After 12HR / 24 Setting, the **HOUR** digit will flash.
5. Press the **SKIP+/TU+/LIGHT+** or **SKIP-/TU-/LIGHT-** Button to adjust the hour. (In 12 HOUR setting, there will be "A" indicating AM and 'P' indicating PM)
6. When the hour is selected, press the **TIME** Button again, the **MINUTE** digit will begin to flash on the display.
7. Press the **SKIP+/TU+/LIGHT+** or **SKIP-/TU-/LIGHT-** Button to adjust the minute.
8. When the minute is selected, press the **TIME** Button again, the **YEAR** will show on the display and flash.
9. Press the **SKIP+/TU+/LIGHT+** or **SKIP-/TU-/LIGHT-** Button to adjust the year.
10. When the year is selected, press the **TIME** Button again, the **MONTH** will show on the display and flash.
11. Press the **SKIP+/TU+/LIGHT+** or **SKIP-/TU-/LIGHT-** Button to adjust the MONTH.
12. When the MONTH is selected, press the **TIME** Button again, the **DAY** will show on the display and flash.
13. Press the **SKIP+/TU+/LIGHT+** or **SKIP-/TU-/LIGHT-** Button to adjust the DAY.
14. When the DAY is selected, press the **TIME** Button again. The display will back to the **CLOCK** display.

Setting Flow



SETTING THE ALARMS

1. You can set up the alarm when the unit is **STANDBY** mode.
 2. Press the **ALARM ON/OFF** Button. The display will show : **ALARM ON** and the default alarm time.
 3. Press and hold the **ALARM ON/OFF** Button. The alarm hour will flash
 4. Press the **SKIP+/TU+/LIGHT+** or **SKIP-/TU-/LIGHT-** Button to select the alarm hour.
 5. When the desired alarm hour is selected, press the **ALARM ON/OFF** Button again, the alarm minute digit will flash.
 6. Press the **SKIP+/TU+/LIGHT+** or **SKIP-/TU-/LIGHT-** Button to select the alarm minute.
 7. When the desired alarm minute is selected, press the **ALARM ON /OFF** Button again, the alarm mode will flash.
 8. Press the **SKIP+/TU+/LIGHT+** or **SKIP-/TU-/LIGHT-** Button to select the alarm modes.
- There are three alarm modes:

US: Alarm wake up mode is **USB ****

rA: Alarm wake up mode is **FM radio**

bU Alarm wake up mode is **buzzer**

9. When the desired alarm mode is selected, press the **ALARM ON /OFF** Button again to complete the alarm setting. The desired alarm time will remain on the display.
 10. If you want to turn off the alarm, press the **ALARM ON/OFF** Button. The display will show "ALARM OFF".
- **Note:** For Wake to USB, please make sure a USB device is inserted and can be properly played, otherwise the unit will default to the buzzer alarm mode automatically.

SNOOZE FUNCTION

1. Whenever the alarm activates, it can be temporarily suspended for a short period of 9 minutes by pressing the **SNOOZE/DIMMER** Button once. The "**ALARM ON**" on the display will keep flashing.
2. The alarm will then automatically activate again after the 9 minutes SNOOZE period has ended.
3. This procedure can be repeated for up to approximately one hour.

FUNCTION MODES

1. Press **STANDBY** Button to turn on the Function mode.
2. Press the **FUNC.** Button to select different function modes.

There are four function modes:

BLUETOOTH -> USB -> AUX-in -> FM RADIO

FM RADIO OPERATION

1. Press **STANDBY** Button to turn on the Function mode.
2. Press the **FUNC.** Button to select **Radio** mode. The display will show radio frequency.

FULL SCAN:

1. Press the **⏮ / FM SCAN/ BT UNPAIR** Button to perform a full FM radio scan

Note: When first used, your radio scanned the FM band for available stations. The station services found were then stored in your radio's memory. You can rescan the band at anytime if you move to a different area or just refresh the stored list of available stations. The scanning process will take a few minutes.

2. After the full scan, the radio will automatically store the first 20 FM stations as presets for instant access to your favorite stations.
3. Use the **TIME/M+/+10** Button to skip to the next stored radio station. (From station: P1 to P20)

AUTO SCAN:

Press and hold the **SKIP+/TU+/LIGHT+ or SKIP-/TU-/LIGHT-** Button for approx.1 second, it will start to search the next radio station in the direction of the search. The search operation simply finds stations with strong signals. Stations with weak signal can only be tuned in manually.

MANUAL TUNNING

Press the **SKIP+/TU+/LIGHT+ or SKIP-/TU-/LIGHT-** Buttons to tune down or up the frequency by 0.1MHz.

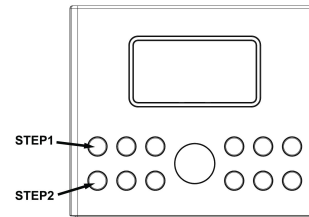
ANTENNA

For best reception, fully extend the FM wire antenna to receive FM stations. .

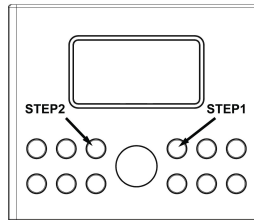
SAVING RADIO STATIONS IN THE MEMORY

1. Tune to the desired stations.
2. Press and hold the **PRESET / ■** Button for approx. 1 second, the display will show '**PXX**' and flashing, where '**XX**' is the next memory station number.
3. Press the **SKIP+/TU+/LIGHT+ or SKIP-/TU-/LIGHT-** Button to select the desired memory station number.
4. Press the **PRESET / ■** Button again to store the station in the memory.
5. Repeat step 2 to 4 to store more radio stations in the memory.
6. Up to maximum 20 FM radio stations can be stored in the memory.

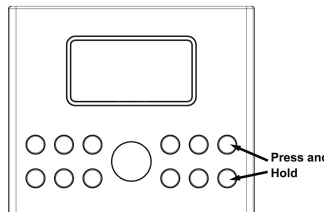
Function Modes



FM Full Scan



FM Auto Scan



SELECT A STORED RADIO STATION IN THE MEMORY

1. Press the **TIME/M+/+10** Button to select the stored radio station. (From station: P1 to P20)
2. Press the **SKIP+/TU+/LIGHT+ or SKIP-/TU-/LIGHT-** Button to select the desired memory station number.

TURN OFF THE RADIO

To turn off the radio. press **STANDBY** Button to return to STANDBY mode.

AUX IN CONNECTION

1. Press **STANDBY** Button to turn on the Function mode.
2. Press **FUNC** Button to select the **AUX-in** mode. The display will show "**AUH**"
3. Insert one side of the audio cable (requires 3.5mm stereo plug, not supplied) into the line-out jack or phones jack on your MP3 player and the other side to the aux-in jack at the back of the unit.
4. Turn on your MP3 player/device and follow the playback instruction.
5. Press **VOL+** Button to increase the volume. Press **VOL-** Button decrease the volume.
6. To stop this function, simply turned off your MP3 player or press **STANDBY** Button to return to STANDBY mode.

BLUETOOTH OPERATION

Connecting BLUETOOTH

1. Press **STANDBY** Button to turn on the Function mode.
2. Press the **FUNC.** Button to select **BLUETOOTH** mode. The display will show "**bt**".
3. Turn on the Bluetooth of your device and search the unit for connection. Your Bluetooth device should find "**HX-202Qi HANNLOMAX**". Select this for connection.
4. If connection is successful, your Bluetooth device will show Bluetooth is connected.
5. Select and play the audio file though your Bluetooth device.
6. You can use the **SKIP+/TU+/LIGHT+** Button to go to the next track or press the **SKIP-/TU-/LIGHT-** Button to go back to the previous track. Press the **SKIP-/TU-/LIGHT-** Button twice to go back to the previous track.
7. Press the **⏮ / FM SCAN/ BT UNPAIR** Button to temporarily pause playing. To resume, press the **⏭ / FM SCAN/ BT UNPAIR** Button again.
8. Press **VOL+** Button to increase the volume. Press **VOL-** Button to decrease the volume.

Bluetooth Auto paring

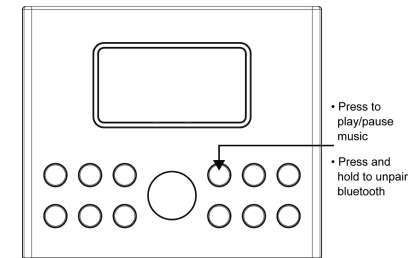
Once the unit paired with the Bluetooth device, it will automatically pair with that device next time when you turn on the unit and that Bluetooth device.

Bluetooth Unpairing

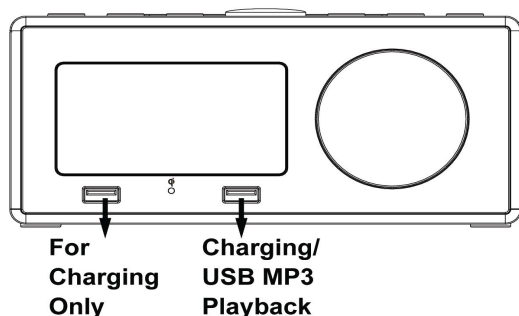
To unpair the Bluetooth device, press and hold **BT UNPAIR** Button. The unit will start to search for a new connection.

Stop the BLUETOOTH streaming

To turn off the Bluetooth streaming, press **STANDBY** Button to return to STANDBY mode.



USB Ports



USB MP3 PLAYBACK

1. Press **STANDBY** Button to turn on the Function mode.
2. Press the **FUNC.** Button to select **USB** mode. The display will show "USB".
3. Plug your USB device into the USB port on the unit, the unit will start reading the files in the USB device and play automatically.

****Please be reminded to connect your USB device to the correct USB slot.**

4. Press the **⏸ / FM SCAN/ BT UNPAIR** Button to temporarily pause playing. To resume, press the **▶ / FM SCAN/ BT UNPAIR** Button again.
5. Press **TIME/M+/+10** Button to skip 10 songs.
6. Press **VOL+** Button to increase the volume. Press **VOL-** Button decrease the volume.
7. To turn off the USB playback, press **STANDBY** Button to return to STANDBY mode.

Note: In USB mode, the USB port for playback can only play MP3 files. It cannot charge any smart device.

SLEEP TO MUSIC FUNCTION

1. This function allows you to listen to the function modes (**radio/Bluetooth/USB/Aux**) while you fall asleep.
2. Press the **SLEEP/TEMP.** Button, the display will show the default sleep time of 90 minutes.
3. Press the **SLEEP/TEMP.** Button repeatedly to set the desired sleep time. (The options are : 90-80-70-60-50-40-30-20-10 min. or OFF)
4. After the pre-set time has elapsed, the unit will turn off and switch to **STANDBY** mode automatically.

CHARGE YOUR DEVICES/PHONES

1. CHARGE WITH USB PORTS

Connect the standard size end of a USB cable (not included) to the USB charging port on the unit and connect the other end to the charging port of your mobile phone or USB device,.

The unit contains two USB ports with 5V ~ 1A charging (each port).

Note:

- i) Some devices may not support USB charging or may require a higher power rating than this product provides. Observe the charging status on your device. Ensure your device is working properly before attempting to charge. Charging function may not be supported for all phones or electronic devices
- ii) In USB mode, the USB port for playback can only play MP3 files. It cannot charge any smart device.

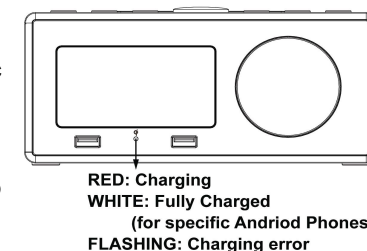
2. WIRELESS CHARGING

Place a supported mobile device on the phone support.

Check the charging icon displayed on the mobile device's screen for the charging status.

- While charging, the Qi indicator will be **RED**.
(Andriod Phones and Apple Phones)
- Fully charged: the Qi indicator will be **WHITE** for some specific Andriod phones.
For Other smart phones, the Qi indicator will stay **RED**.
- Improper charging error**: the Qi indicator will keep **FLASHING**.
(Android Phones and Apple Phones)

Wireless Charging Indicator



The wireless charger is compatible with Wireless Power Consortium (WPC) certified devices.

****Note:**

- Do not place foreign materials, such as metal objects, magnets and magnetic stripe card between the mobile device and the wireless charger. The mobile device may not charge properly or may be damaged due to overheating.
- Wireless charging may not work properly if you have attached a thick case to your mobile device. If your case is thick, remove it before placing your mobile device on the wireless charger.
- If the mobile device is not placed properly on the charging surface, or depending on the location of the mobile device's wireless charging coil, your mobile device may not charge properly.
- When the mobile device is fully charged, remove it from the wireless charger.

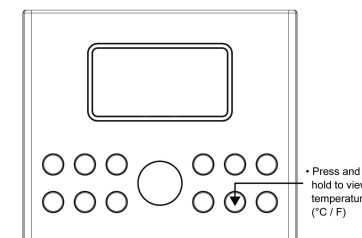
DIMMER

Press the **DIMMER/SNOOZE** Button to adjust the brightness of the display. There will be 7 levels of brightness.

TEMPERATURE

In **STANDBY** mode, press and hold the **SLEEP/TEMP.** Button to select **Degree Celsius (C)** or **Fahrenheit (F)**.

In Standby Mode



In Standby Mode

