



## CD MICRO WITH FM RADIO, BLUETOOTH AND DUAL USB PORTS FOR CHARGING (2.4A and 1A)



**Model : HX- 1082BT**

**(Bluetooth pairing code: HX-1082BT HANNLMAX)**

### INSTRUCTION MANUAL

**Note:** Please read and follow these instructions before using your unit.

1. Read these instructions. Keep these instructions. Heed all warnings. Follow all instructions.
2. Do not use this apparatus near water.
3. Clean only with dry cloth.
4. Do not block any ventilation openings. Install in accordance with the manufacturer's instructions.
5. Do not install near any heat sources such as radiators, heat registers, stoves, or other apparatus (including amplifiers) that produce heat.
6. Do not defeat the safety purpose of the polarized or grounding-type plug. A polarized plug has two blades with one wider than the other. A grounding type plug has two blades and a third grounding prong. The wide blade or the third prong are provided for your safety. If the provided plug does not fit into your outlet, consult an electrician for replacement of the obsolete outlet.
7. Protect the power cord from being walked on or pinched particularly at plugs, convenience receptacles, and the point where they exit from the apparatus.
8. Only use attachments/accessories specified by the manufacturer.
9. Use only with the cart, stand, tripod, bracket, or table specified by the manufacturer, or sold with the apparatus. When a cart is used, use caution when moving the cart/apparatus combination to avoid injury from tip-over.
10. Unplug this apparatus during lightning storms or when unused for long periods of time.
11. Refer all servicing to qualified service personnel. Servicing is required when the apparatus has been damaged in any way, such as power-supply cord or plug is damaged, liquid has been spilled or objects have fallen into the apparatus, the apparatus has been exposed to rain or moisture, does not operate normally, or has been dropped.
12. Grounding or Polarization – This product may be equipped with a polarized alternating-current line plug (a plug having one blade wider than the other). This plug will fit into the power outlet only one way. This is a safety feature. If you are unable to insert the plug fully into the outlet, try reversing the plug. If the plug should still fail to fit, contact your electrician to replace your obsolete outlet. Do not defeat the safety purpose of the polarized plug.





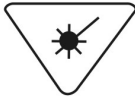
13. Alternate Warnings – This product is equipped with a three-wire ground-type plug, a plug having a third (grounding) pin. This plug will only into a grounding-type power outlet. This is a safety feature. If you are unable to insert the plug into the outlet, contact your electrician to replace your obsolete outlet. Do not defeat the safety purpose of the grounding-type plug.
14. Ventilation – Slots and openings in the cabinet are provided for ventilation and to ensure reliable operation of the product and to protect it from overheating, and these openings must not be blocked or covered. The openings should never be blocked by placing the product on a bed, sofa, rug, or other similar surface. This product should not be placed in a built-in installation such as a bookcase or rack unless proper ventilation is provided or the manufacturer's instructions have been adhered to.
15. The MAINS plug or an appliance coupler is used as the disconnect device, the disconnect device shall remain readily operable.
16. □: CLASS II apparatus with double insulation, and no protective earth provided.
17. Caution Marking and rating plate was located at bottom enclosure of the apparatus.
18. To reduce the risk of fire or electric shock, do not expose this apparatus to rain or moisture.
19. The apparatus shall not be exposed to dripping or splashing and that no objects filled with liquids, such as vases, shall be placed on apparatus.
20. The mains plug is used as disconnect device. The mains plug of apparatus should not be obstructed OR should be easily accessed during intended use. To be completely disconnect the power input, the mains plug or apparatus shall be disconnected from the mains.
21. Battery shall not be exposed to excessive heat such as sunshine, fire or the like.
22. Excessive sound pressure from earphones and headphone can cause hearing loss.

#### FCC NOTICE

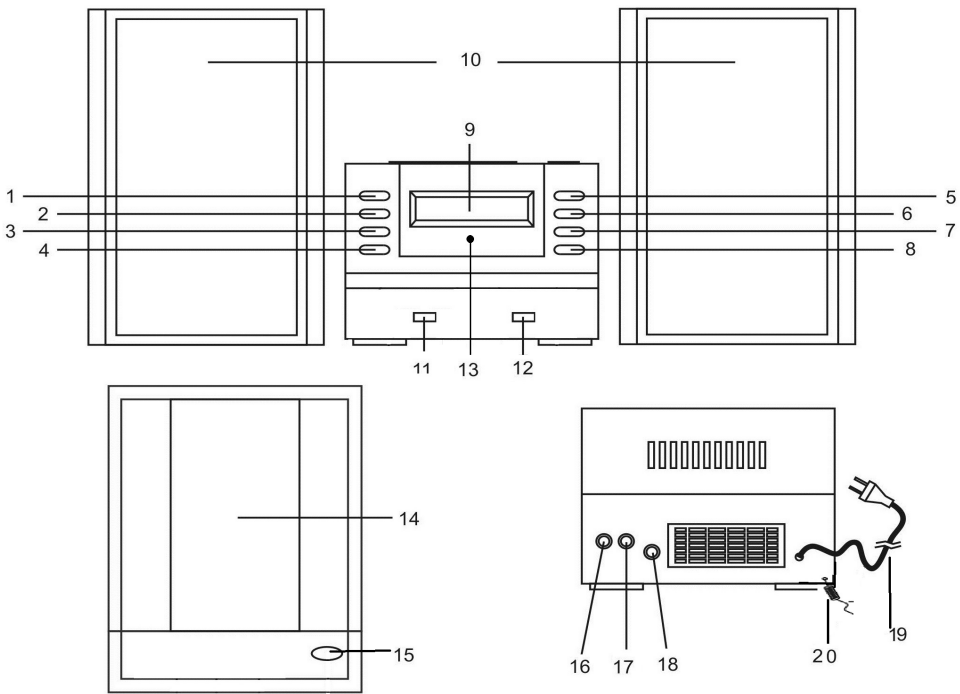
This equipment has been tested and found to comply with the limits for a Class B digital device, pursuant to Part 15 of the FCC Rules. These limits are designed to provide reasonable protection against harmful interference in a residential installation. This equipment generates, uses and can radiate radio frequency energy and, if not installed and used in accordance with the instructions, may cause harmful interference to radio communications.

However, there is no guarantee that interference will not occur in a particular installation. If this equipment does cause harmful interference to radio or television reception, which can be determined by turning the equipment off and on, the user is encouraged to try to correct the interference by one or more of the following measures:

- Reorient or relocate the receiving antenna.
- Increase the separation between the equipment and receiver.
- Connect the equipment into an outlet on a circuit different from that to which the receiver is needed.
- Consult the dealer or an experienced radio/TV technician for help.

 <p>The lightning flash with arrowhead symbol, with an equilateral triangle is intended to alert the user to the presence of un-insulated dangerous voltage within the products enclosure that may be of sufficient magnitude to constitute a risk of electric shock to persons.</p>	<b>CAUTION</b>	 <p>The exclamation point within an equilateral triangle is intended to alert the user to the presence of important operating and maintenance (servicing) instruction in the literature accompanying the appliance.</p>
	<b>RISK OF ELECTRIC SHOCK DO NOT OPEN</b>	
<b>LASER SAFETY</b> <p>This unit uses a laser. Only a qualified service person should remove the cover or attempt to service this device to avoid possible eye injury. Caution: USE OF CONTROLS OR ADJUSTMENT OF PERFORMANCE OF PROCEDURE OTHER THAN SPECIFIED HEREIN MAY RESULT IN HAZARDOUS RADIATION EXPOSURE.</p>		<b>DANGER:</b>  <p>INVISIBLE LASER RADIATION WHEN OPEN AND INTERLOCK FAILED OR DEFEATED. AVOID DIRECT EXPOSURE TO LASER BEAM.</p>

**LOCATION OF CONTROLS**



1.	POWER/OFF/FUNC. button	11.	USB Charging port <b>(2.4A)</b>
2.	TIME/P-MODE/PRO./MEM/+10 button	12.	USB Port for MP3 playback and Charging <b>(1A)</b>
3.	VOL+ button	13.	Remote Sensor
4.	VOL- button	14.	CD Door
5.	Play/Pause/PAIR button	15.	CD Door Open Button
6.	STOP/M+ button	16.	Right Speaker Jack (R)
7.	TIME+/SKIP+/TU+ button	17.	Left Speaker Jack (L)
8.	TIME- /SKIP-/TU- button	18.	Aux-in Jack
9.	LCD display	19.	AC Power Cord
10.	Speakers	20.	FM Antenna

**SPECIFICATIONS**

Frequency Range: FM 88 - 108 MHz  
Power Supply: AC 120V ~ 60 Hz  
USB Rated Output: DC5V 1A  
DC 5V 2.4A

Specifications are subject to change without further notice.

**CONNECTING THE LOUDSPEAKERS**

Connect the cables of the two loudspeakers to the corresponding input **(R)** for the right speaker and input **(L)** for the left speaker, located at the back of the unit.

**ATTENTION:**

- Connect the loudspeakers before powering the unit;
- The unit may not work properly or get damaged if you use speakers different than the ones supplied with the unit.

**AC OPERATION**

Connect the AC Power cord to a standard AC outlet.

**ATTENTION**

1. Do not plug or unplug the power cable while you have wet hands;
2. When planning not to use this unit for a long time, disconnect the power cable from the wall outlet;
3. When disconnecting the power cord from the wall outlet, do not pull on the cord in order to avoid shock risks caused by damaged cable.

**SETTING THE CLOCK**

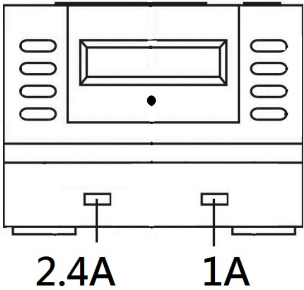
1. Press **TIME/P-MODE/PRO./MEM/10+** button to set the time. The **HOUR** digit will begin to flash on the display.
2. Press **TIME+/SKIP+/TU+** button or **TIME- /SKIP-/TU-** button to adjust the **HOUR**. Press **TIME/P-MODE/PRO./MEM/10+** button to confirm **HOUR**.
3. The **MINUTE** digit will begin to flash on the display. Press **TIME+/SKIP+/TU+** button or **TIME- /SKIP-/TU-** button to adjust the MINUTE. Press **TIME/P-MODE/PRO./MEM/10+** button to confirm MINUTE.

**USB CHARGE YOUR DEVICES (2.4A and 1A)**

Connect the standard size end of a USB cable (not included) to the USB ports on the unit and connect the other end to the charging port of your devices.

The unit contains two USB ports **(2.4A and 1A)**.

**Remarks:** Some devices may not support USB charging or may require a higher power rating than this product provides. Observe the charging status on your device. Ensure your device is working properly before attempting to charge. Charging function may not be supported for all phones or electronic devices



## **RADIO OPERATION**

1. Press **POWER/OFF/FUNC.** button to select the **FM Radio**.
2. **MANUAL TUNING:** Press the **TIME+/SKIP+/TU+** button or **TIME- /SKIP-/TU-** button step by step to tune to the desired radio stations.
3. **DIGITAL TUNING:** Press and hold the **TIME+/SKIP+/TU+** button or **TIME- /SKIP-/TU-** button to search the next radio station in the direction of the search. The search operation finds stations with strong signals, Stations with weak signal can only tuned manually.
4. Use the **VOL+ or VOL-** knob to adjust the volume to the desired listening level.
5. To turn off the radio, press and hold **POWER/OFF/FUNC.** button to go to Clock mode.

Note: For better FM reception, please fully extend the FM antenna located at the back of the unit and rotate to obtain the best possible station reception. .

## **SAVING RADIO STATIONS IN THE MEMORY**

**Note :** If you use this unit in the first time, or after plug off the power cord from a wall outlet, the unit memory number will be starting from “**P01**”.

1. Tune to the desired FM radio station.
2. Press the **TIME/P-MODE/PRO./MEM/10+** button, the display will show the memory station number and “**P01**” flash continuously.
3. Press **TIME/P-MODE/PRO./MEM/10+** button again to store the station into the memory.
4. Repeat step 2 to 3 to store more radio stations in the memory.
5. Up to 10 FM radio stations can be stored in the memory.

## **TO LISTEN A STORED RADIO STATION IN THE MEMORY**

Press the **STOP/M+** button to skip to the next stored radio station.

## **BLUETOOTH OPERATION**

### **Connecting BLUETOOTH**

1. Press **POWER/OFF/FUNC.** button to select the BLUETOOTH mode, ‘**bt**’ will show in the display.
2. Turn on the Bluetooth of your device and search the unit for connection. Your Bluetooth device should find “**HX-1082BT HANNLOMAX**”. If password is needed for connection, please enter “0000”.
3. If connection is successful, your Bluetooth device may show Bluetooth is connected.
4. Select and play the audio files through your Bluetooth device.
5. You can use the **TIME+/SKIP+/TU+** button to go to the next track or press the **TIME- /SKIP-/TU-** button to go back to the previous track.
6. Press the **PLAY/PAUSE/PAIR** button to pause playing. To resume, press the **PLAY/PAUSE/PAIR** button again.

### **To Unpair the Bluetooth connection**

Press and hold **PLAY/PAUSE/PAIR** button to unpair the Bluetooth connection.

The CD Micro system will search for a new pairing.

### **Turn Off the Bluetooth Operation**

To turn off the Bluetooth, press and hold **POWER/OFF/FUNC.** button to go to Clock mode.

## **CD OPERATION**

1. Press **POWER/OFF/FUNC.** Button to select the **CD** mode
2. Insert an audio CD disc (CD/CDR /CDRW) in the CD compartment and close the CD door, the unit will start reading the disc and play automatically.
3. During playing, press the **PLAY/PAUSE/PAIR** button to temporarily pause playing. To resume, press the **PLAY/PAUSE/PAIR** button again.
4. To stop playing the disc, simply press the **STOP/M+** button
5. To turn off the CD mode, press and hold **POWER/OFF/FUNC.** button to go to Clock mode.

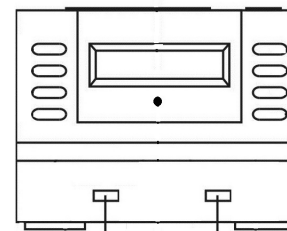
## **CD Programming**

The CD programming can only be done in **STOP/M+** mode

1. Press the **TIME/P-MODE/PRO./MEM/+10** button, the LCD display will show “**P01**”.
2. Use the **TIME+/SKIP+/TU+** button or **TIME- /SKIP-/TU-** button to select the desired track.
3. Press the **TIME/P-MODE/PRO./MEM/+10** button again to store the selected track in the memory, the LCD display will show “**P02**”.
4. Repeat steps 2 to 3 to store more tracks in the memory. You can store up to 20 tracks in the memory.
5. Press the **PLAY/PAUSE** button to start playing the disc in the programmed order.
6. To stop playing, press the **STOP/M+** button.
7. To cancel the programming list, press the **STOP/M+** button again or open the CD door.

## **PLAYING MP3 FILES WITH USB DEVICE**

1. Press **POWER/OFF/FUNC.** Button to select the **USB** mode.
2. Plug your USB device into the **correct USB port** on the unit, it will start reading the files in the USB device and will play the tracks automatically.



**PLAY MP3 : NO YES**

3. To pause playing the MP3 files, press the **PLAY/PAUSE/PAIR** button. To resume playing the MP3 files, press **PLAY/PAUSE/PAIR** button again. .
4. Use the **VOL+ or VOL-** knob to adjust the volume to the desired listening level.
5. Press and hold **TIME/P-MODE/PRO./MEM/+10** button to skip 10 tracks.
6. To stop playing the MP3 files, press the **STOP/M+** button.
7. To turn off the USB mode, press and hold **POWER/OFF/FUNC.** button to go to Clock mode.

### Skip Mode

1. In CD/USB/BLEETOOTH mode, press the **TIME+/SKIP+/TU+** button to go to the next track.
2. In CD/USB/BLEETOOTH mode, press the **TIME- /SKIP-/TU-** button to go back to beginning of the track.
3. In CD/USB/BLEETOOTH mode, press the **TIME- /SKIP-/TU-** button twice to go back to the previous track.

### Different Play Mode ( Repeat 1 / Repeat all / Random)

In CD/USB mode, press the **TIME/P-MODE/PRO./MEM/+10** button repeatedly to select different kinds of play mode with the following sequence.

#### **Repeat 1 ➡ Repeat ALL ➡ Random ➡ Normal**

- **Repeat 1** (🔁 will flash on the display) – repeat the track being played.
- **Repeat ALL** (🔁 will stay light on the display)– repeat all the tracks in the entire disc.
- **Random** (🔁 will flash rapidly on the display)– play the tracks in a random sequence.
- **Normal** (🔁 will disappear)– play the tracks in sequence.

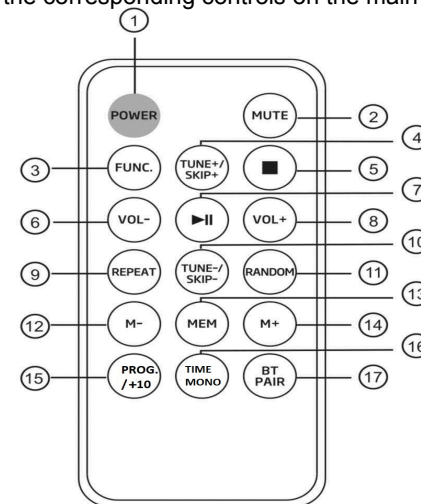
### AUX-IN CONNECTION

1. At any mode ( RADIO / Bluetooth / CD / USB ) , you can insert one side of the audio cable (not included) into the Line-Out or Phone Jack on your MP3 Player or audio device and the other side into the AUX-IN jack of the unit.
2. Turn on your MP3 player or audio device and follow its playback instructions.
3. Use the **VOL+ or VOL-** knob to adjust the volume to the desired listening level.
4. To turn off the Aux-in connection, turn off your MP3 player or remove the aux-in cable.

### REMOTE CONTROL OPERATION

**Reminder:** Take off the plastic sheet located at the battery compartment tray to activate the remote control.

Point the remote control at the remote sensor. The functions of the buttons on the remote control are same as the corresponding controls on the main unit.



1. **POWER** ➤ use this button to turn the unit ON/OFF.
2. **MUTE** ➤ use this button to turn off the sound.
3. **FUNC.** ➤ use this button to select the function
4. **TUNE+/SKIP+** ➤ in CD/USB/BLEETOOTH mode, use this button to skip to the next track. In FM radio mode, use this button to search the next available station in forward direction.
5. **■ (STOP)** ➤ in CD/USB/BLEETOOTH mode, use this button to stop playing.
6. **VOL-** ➤ use this button to decrease the volume.
7. **⏸ (PLAY/PAUSE)** ➤ in CD/USB/BLEETOOTH mode, use this button to start or pause playing.
8. **VOL+** ➤ use this button to increase the volume.
9. **REPEAT** ➤ in CD/USB mode, use this button to select the REPEAT function.
10. **TUNE-/SKIP-** ➤ in CD/USB/BLEETOOTH mode, use this button to skip back to the previous track. In FM mode, use this button search the next available station in backward direction.
11. **RANDOM** ➤ in CD/USB mode, use this button to select the RANDOM function.
12. **M-** ➤ In FM radio mode, use this button to skip to the next stored radio station in backward order..
13. **MEM** ➤ in FM radio mode, use this button to store the select radio station in the memory.
14. **M+** ➤ In FM radio mode, use this button to skip to the next stored radio station in forward order.
15. **PROG. / +10** ➤ in CD mode, use this button to program the playback order. In USB mode, use this button to skip 10 tracks.
16. **TIME / MONO** ➤ in CLOCK mode, use this button to set the clock. In radio mode, use this button to select the Mono or Stereo mode.
17. **BT PAIR** ➤ Press this button to disconnect the Bluetooth pairing and go into pairing mode.